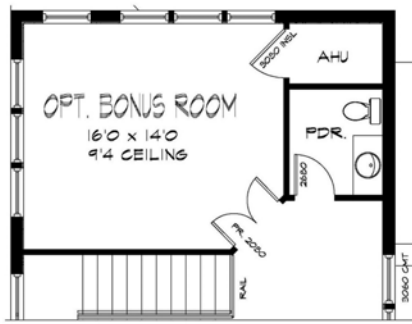


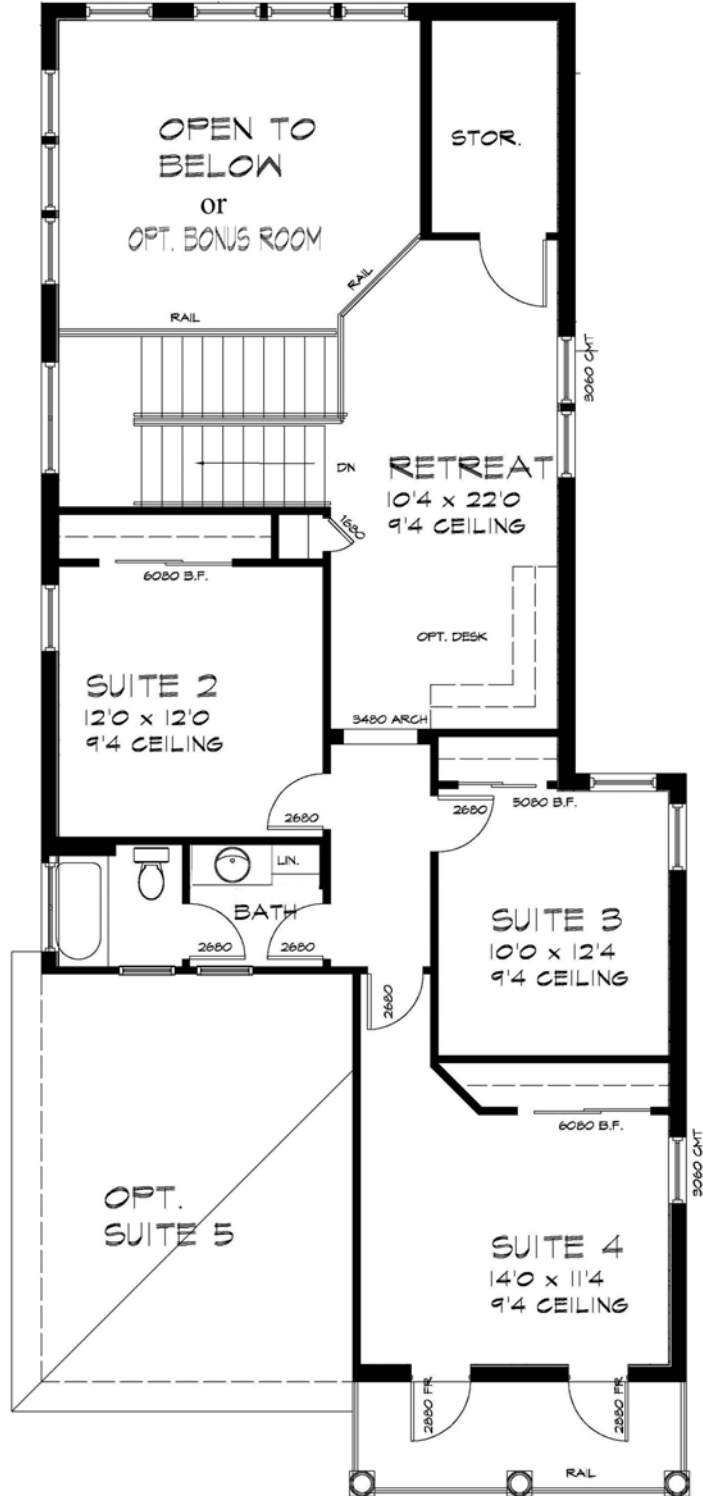
AREA TABULATION

1st STORY LIV.	1594 S.F.
2nd STORY LIV.	1034 S.F.
TOTAL LIVING AREA	2628 S.F.
GARAGE	422 S.F.
PORCHES	342 S.F.
TOTAL UNDER ROOF	3392 S.F.

The Carriage First Floor Plan
Vision Homes of SWFL, Inc.



+ 217 SQ.FT.



The Carriage Second Floor Plan
Vision Homes of SWFL, Inc.