

Nantucket IV:  
Plenty of Room  
with a View

AS FEATURED IN

HOME & DESIGN

M A G A Z I N E



For those who crave wide-open spaces but don't want to sacrifice upscale amenities, Vision Homes' new Nantucket IV at Eagle Trace Estates may have just the combination of country estate and metropolitan mien to satisfy.

"We were hearing from people who were looking for the best in new-home construction with a bit of a country view — a little more land, but still secure and convenient to everything," says Michael Padgett, vice president of Vision Homes. "Eagle Trace is the only gated community in Sarasota with one-acre-plus home sites."

Just two and one-half miles east of I-75, off Palmer Boulevard, Eagle Trace is an intimate community of one-acre and larger home sites, offering such perks as golf membership eligibility at nearby prestigious Laurel Oak Country Club as well as proximity to the new state-of-the-art elementary school scheduled to open in 2005.

Symmetry and proportion are hallmarks of the classic architecture of this four-bedroom, four and one-half bath, 3,600-plus-square-foot home. A brick-paver path winds its way to the entry plaza flanked by carriage-lanterned columns. Brass inlaid double glass doors open to the grand foyer, highlighted with an elegant octagonal floor inlay.

"This foyer is one of the unique features of this home," says Padgett. "It is substantial enough that you don't just 'fall' into the living room as soon as you enter." Indeed, the floor plan of the Nantucket IV manages to create a haven of privacy for the home's formal areas as well as the private. While the design is open and flowing, a vestibule provides a buffer zone between the very refined living room, dining room and foyer and the more casual kitchen, breakfast and family rooms.

"Unlike many open plans, the rooms in this home are not just labels," comments Padgett. "There is a clear definition of spaces." Architectural details — smooth white ▶

*PREVIOUS PAGE — The living room features a subtle, soothing palette, with plush taupe carpeting and a pastoral trompe l'oeil accenting the alcove.*

*LEFT — Behind the scenes features are standard in the Nantucket IV, like the super-efficient 12-SEER Lennox air conditioning system that not only provides state-of-the-art heating and cooling, but also includes the revolutionary PureAir air purification system, for controlling airborne contaminants in the home.*



columns, arches and dramatic ceiling treatments – lend an intimacy and definition to rooms, even as 12-foot (and higher) ceilings give them a spacious air.

Flanking the grand foyer, the living and dining rooms each feature a large bay window and a broad arched niche, inviting the eye and the visitor, into the room. And yet these facing rooms offer bold contrast as well as symmetry. The dining room, with its stepped ceiling is painted a vivid red with crisp white trim, and continues the tile floor of the foyer, while the living room features

*ABOVE – The forward areas of the Nantucket IV offer formal elegance. Architectural details, like entry columns, buffet alcove and stepped ceiling grace the dining room.*

*OPPOSITE – The master suite offers all of the sought-after features of today's fully equipped boudoir — bay windows (with room for a cozy seating area), eight-foot sliding glass doors and tray ceiling detail.*



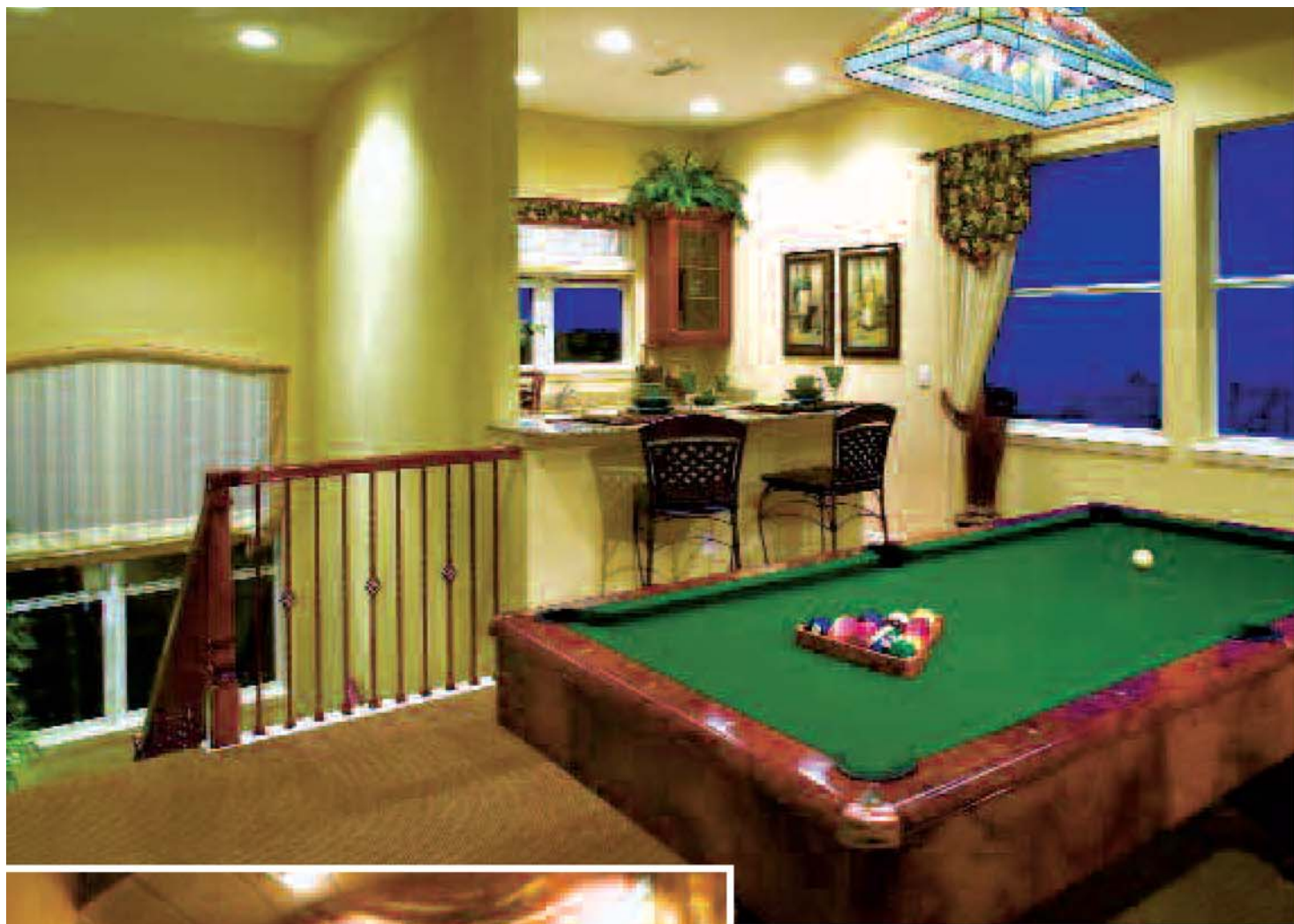
a more subtle, soothing palette, with plush taupe carpeting and a pastoral trompe l'oeil accenting the alcove. (This same misty vignette is echoed in the nearby powder room.)

An adjoining study/media room is likewise open, with multiple eight-foot, six-panel colonist doors, and at the same time, a distinct space, defined by wide Royal River plank flooring.

Cascading arches transition through a vestibule to the Nantucket's private "family" refuge. A raised waffle [www.HomeAndDesign.net](http://www.HomeAndDesign.net)

ceiling, wrapped with five-inch crown, encompasses the spacious family room. With room for plenty of comfortable seating, the focal point of this space is a built-in entertainment center with arched display units, fireplace and plasma TV.

A granite bar invites communication with the adjacent kitchen in this warm and appealing space. Though casual, the kitchen is anything but utilitarian. "One of the first things that people tend to upgrade in a new home are the kitchen cabinets," says Padgett. "In ▶



this kitchen, all of the cabinetry is already top-of-the-line."

Cherry cabinets, offer raised panels, glazed to bring out the warm grain of the wood. In keeping with today's furniture-style cabinetry, double-stepped heights are finished with elegant trim – crown moulding and decorative panels. Subtle under-cabinet lighting and a full tile backsplash complete the polished look of the space. But make no mistake; professional-style stainless steel appli-

*ABOVE – Up a short flight of stairs, the bonus room, with plenty of space for billiards, features a fully outfitted wet bar. An adjoining bedroom and bath make this a secluded guest suite.*

*BELOW – This tres European powder room, with its faux finish castle block, echoes the misty trompe l'oeil mural featured in the adjoining living room alcove.*

*OPPOSITE – Eagle Trace Estates offers one-acre-plus home sites, along with upscale amenities like golf membership eligibility at nearby Laurel Oak Country Club.*

[www.HomeAndDesign.net](http://www.HomeAndDesign.net)



ances and undermount stainless steel sink are just a few of the features that make this picture perfect kitchen really work.

The breakfast nook overlooks the grand lanai and the wide expanse of grounds beyond. A graceful curving pool is accented with spa and waterfall. The entire rear of the home takes advantage of this striking view, with the family room, master bedroom and bedroom number two all spilling out through glass doors.

A short hallway from the family room preserves the privacy of the master suite. This spacious retreat offers all of the sought-after features of today's fully equipped boudoir. Bay windows (with room for a cozy seating area), eight-foot sliding glass doors and a trio of headboard windows fill the space with light, and a tray ceiling detail tailors the line of the room.

Generous his-and-her closets lead to a master bath outfitted in the same quality detail as the kitchen, with top-notch cabinetry, granite counters and undermounted sinks. A corner garden tub features a glass-block wall adding a sophisticated touch for natural light and privacy.

[www.HomeAndDesign.net](http://www.HomeAndDesign.net)

The Nantucket IV's two additional ground-floor bedrooms are across the kitchen/family room, enhancing the sense of privacy for the master suite. These bedrooms share a full bath that doesn't scrimp on the same upscale fit and finish of the rest of the home.

Up a short flight of stairs from the kitchen, a bonus room is outfitted as a game room with pool table, and another bedroom and bath make for a perfect private guest suite.

"This home was designed for the family that likes its open spaces, both inside and out," says Padgett. With its ingenious layout, that is at once open and airy, while still preserving privacy, the Nantucket IV is a model of elegant design. ♦

*Courtesy of Vision Homes*

*941 377-7773*

[www.visionhomesflorida.com](http://www.visionhomesflorida.com)

*Written by Paul Kerr*

*Photography by Greg Wilson Group*

*Home & Design 91*